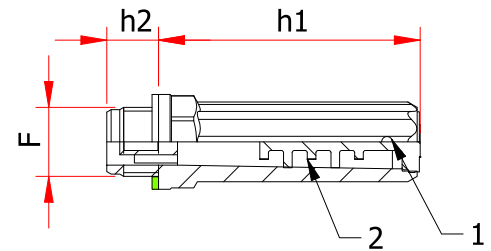
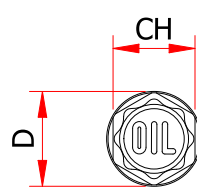


TK - EXTENDED FILLER PLUG WITH BUILT-IN LABYRINTH OVERFLOW PROTECTION



1 = Breather hole
2 = Internal labyrinth

plastic filler breathers

Threaded extended plug with labyrinth vane located in its body, designed for applications where there is a considerable movement of oil and consequent danger of oil leaks from the breather hole (\varnothing 2,5 mm). Hex bottom allows tightening by wrench. The combined action of the internal splash guards and the raised position of the vent hole at the top of the cylinder protects against oil leakages.

- **Materiale:** Polyamide PA66.
- **Sealing:** flat fiber gasket.
- **Maximum working temperature:** 100°C/212°F.

Cod.	F	CH	D	h1	h2	Weight gr	Pack.
TK/14	G 1/4"	17	20	55	12	9	100
TK/38	G 3/8"	19	22	60	12	12	100
TK/12	G 1/2"	22	28	65	12	18	100
TK/16.15	M 16x1,5	19	22	60	12	13	100
TK/18.15	M 18x1,5	19	22	60	12	13	100